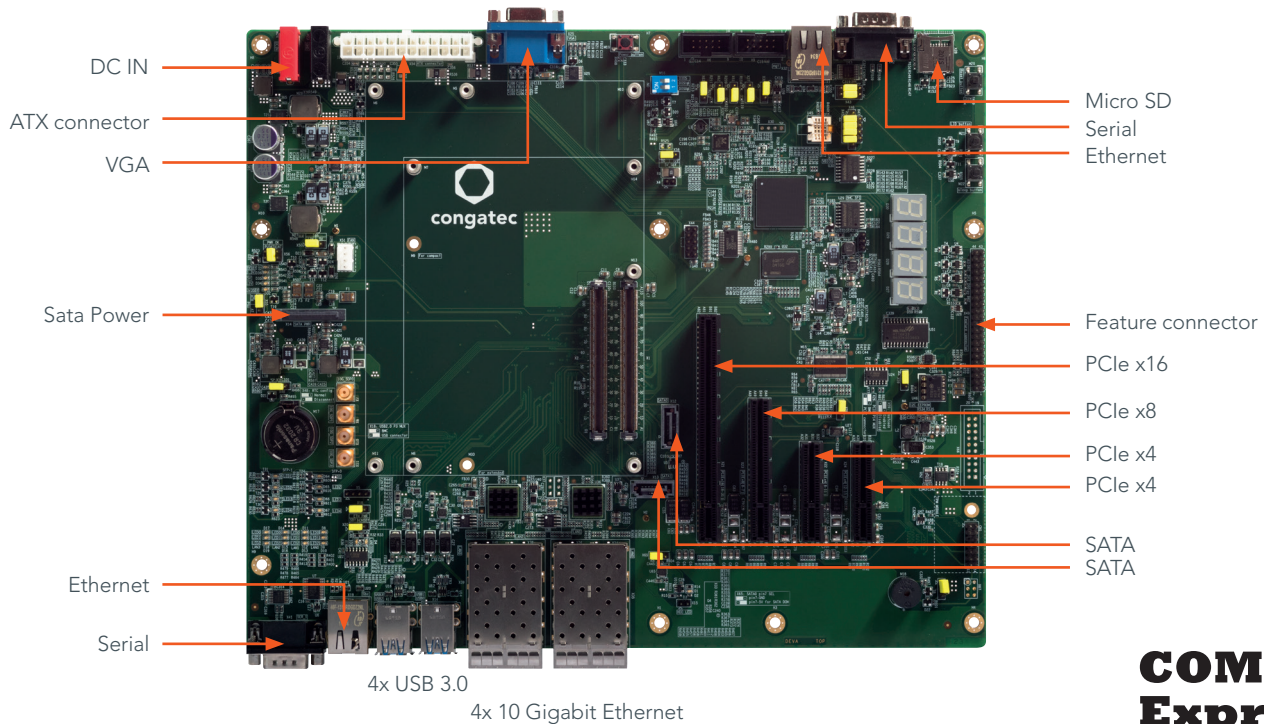


EVALUATION CARRIER BOARD FOR COM EXPRESS TYPE 7

conga-X7/EVAL



Evaluation Carrier Board for COM Express Type 7 modules.

To achieve a quick start with COM Express Type 7 modules congatec offers an evaluation carrier board, which routes all the signals to standard interface connectors.

Ethernet	4x 10 Gigabit Ethernet SFP+ 1x Gbe RJ45
Internal connectors	32x PCIe lanes (1x PCIe (3.0) x16 1x PCIe(3.0)x8 5th lane shared with BMC 2x PCIe (3.0) x4) 2x SATA Gen3 1x LPC header 1x I ² C Bus 1x SM Bus 1x GPIO 1x FAN control
External connectors	4x USB 3.0/2.0 4th USB2.0 shared with BMC 1x VGA connecting DB-15 1x COM port from module
Baseboard Management Controller	1x VGA iKVM virtual storage
Buttons	Power button Reset button Sleep button LID button
Postcode	4x 7-Segment Postcode LEDs connected to GP_I2C bus
Power Input	ATX Power Supply 12V/GND banana jacks
Temperature	Commercial: Operating: 0 .. +60°C Storage: -40 .. +85°C Industrial: Operating: -40 .. +85°C Storage: -40 .. +85°C
Humidity	Operating: 10 - 90% r. H. non cond. Storage: 5 - 95% r. H. non cond.
Size	294 x 244 mm (11.5" x 9.6")

conga-X7/EVAL | Order Information

Article	PN	Description
conga-X7/EVAL	065420	congatec COM Express Type7 evaluation carrier with 4x 10Gbe Ethernet. Commercial temperature range.
conga-X7/EVAL / industrial	065421	congatec COM Express Type7 evaluation carrier without 10Gbe Ethernet and BMC related function. Industrial temperature range.

COM Express Type 7 modules | Order Information

Article	PN	Description
conga-B7XD/X-D1577	047500	COM Express Type 7 Basic module with Intel® Xeon™ D1577 processor with 16 Cores, 1.3GHz up to 2.1GHz core frequency, 24MB Cache with Intel® Cache Allocation Technology and 2400 MT/s dual channel DDR4 memory interface for up to 48GB SODIMM memory. Features two 10GbE KR interface ports. 45W TDP, commercial temperature range.
conga-B7XD/X-D1548	047502	COM Express Type 7 Basic module with Intel® Xeon™ D1548 processor with 8 Cores, 2.0GHz up to 2.6GHz core frequency, 12MB Cache with Intel® Cache Allocation Technology and 2133 MT/s dual channel DDR4 memory interface for up to 48GB SODIMM memory. Features two 10GbE KR interface ports. 45W TDP, commercial temperature range.
conga-B7XD/X-D1527	047503	COM Express Type 7 Basic module with Intel® Xeon™ D1527 processor with 4 Cores, 2.2GHz up to 2.7GHz core frequency, 6MB Cache with Intel® Cache Allocation Technology and 2133 MT/s dual channel DDR4 memory interface for up to SODIMM 48GB memory. Features two 10GbE KR interface ports. 35W TDP, commercial temperature range.
conga-B7XD/P-D1509	047504	COM Express Type 7 Basic module with Intel® Pentium™ D1509 processor with 2 Cores, 1.5GHz core frequency, 3MB Cache with Intel® Cache Allocation Technology and 2133 MT/s dual channel DDR4 memory interface for up to 48GB SODIMM memory. 19W TDP, commercial temperature range.
conga-B7XD/P-D1508	047505	COM Express Type 7 Basic module with Intel® Pentium™ D1508 processor with 2 Cores, 2.2GHz up to 2.6GHz core frequency, 3MB Cache with Intel® Cache Allocation Technology and 2133 MT/s dual channel DDR4 memory interface for up to 48GB SODIMM memory. Features two 10GbE KR interface ports. 25W TDP, commercial temperature range.
conga-B7XD/i-X-D1559	047520	COM Express Type 7 Basic module with Intel® Xeon™ D1559 processor with 12 Cores, 1.5GHz up to 2.1GHz core frequency, 18MB Cache with Intel® Cache Allocation Technology and 2133 MT/s dual channel DDR4 memory interface for up to 48GB SODIMM memory. Features two 10GbE KR interface ports. 45W TDP, industrial temperature range.
conga-B7XD/i-X-D1539	047521	COM Express Type 7 Basic module with Intel® Xeon™ D1539 processor with 8 Cores, 1.6GHz up to 2.2GHz core frequency, 12MB Cache with Intel® Cache Allocation Technology and 2133 MT/s dual channel DDR4 memory interface for up to 48GB SODIMM memory. Features two 10GbE KR interface ports. 35W TDP, industrial temperature range.
conga-B7XD/i-X-D1529	047522	COM Express Type 7 Basic module with Intel® Xeon™ D1529 processor with 4 Cores, 1.3GHz core frequency, 6MB Cache with Intel® Cache Allocation Technology and 2133 MT/s dual channel DDR4 memory interface for up to 48GB SODIMM memory. 20W TDP, industrial temperature range.
conga-B7XD/i-X-D1519	047523	COM Express Type 7 Basic module with Intel® Pentium™ D1519 processor with 4 Cores, 1.5GHz up to 2.1GHz core frequency, 6MB Cache with Intel® Cache Allocation Technology and 2133 MT/s dual channel DDR4 memory interface for up to 48GB SODIMM memory. Features two 10GbE KR interface ports. 25W TDP, industrial temperature range.