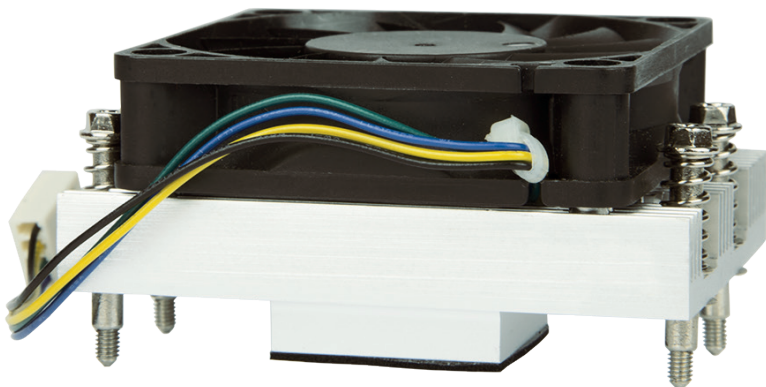
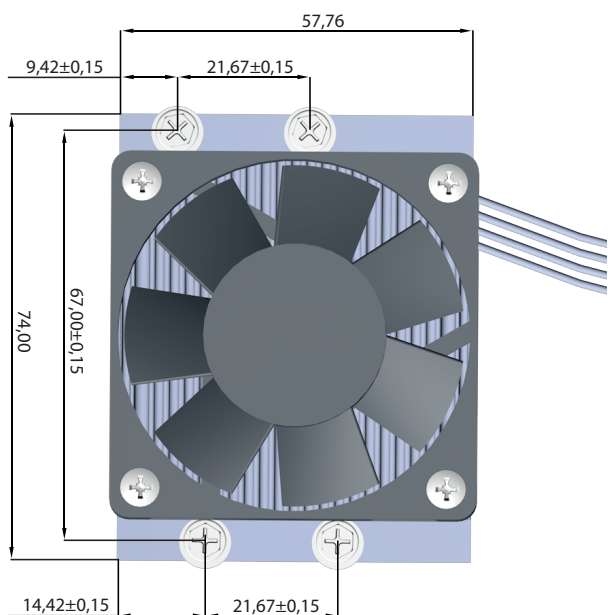


silent but effective cooling

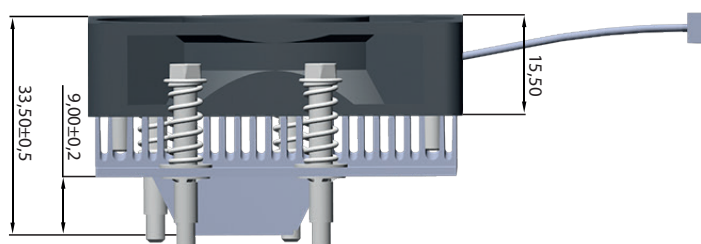
Active Heatsink Cooler for conga-IGX



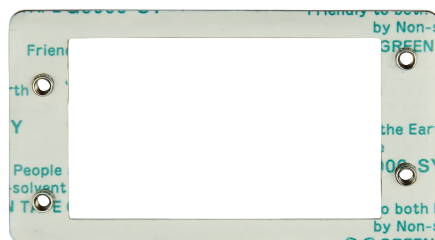
conga-IGX Active Cooler	Full aluminium incl. isolating backplate
Weight	160g
Integrated Fan	
- Size	60 x60 x15.5 mm 12V DC. dual ball bearing
- Power consumption	max. 0.46A @ 100% PWM duty cycle
- Speed	900 rpm - 6000 rpm (non. speed)
- Sound level	49.2 dB(A) max.
- Operating temperature range	-10°C - 70°C
- MTBF	70000 hrs @ 40°C
Supported Processors	All AMD embedded G-Series SOC processors up to 25W TDP
Heatsink Mount	Spring-loaded mounting screws for specified downforce Recommended mounting screw torque = 0.6Nm
Backplate	Isolated, metal backplate provides 4 mounting threads for heatsink
Order Code	052432 (conga-IGX Active Cooler with Backplate)



top view [all units in mm]



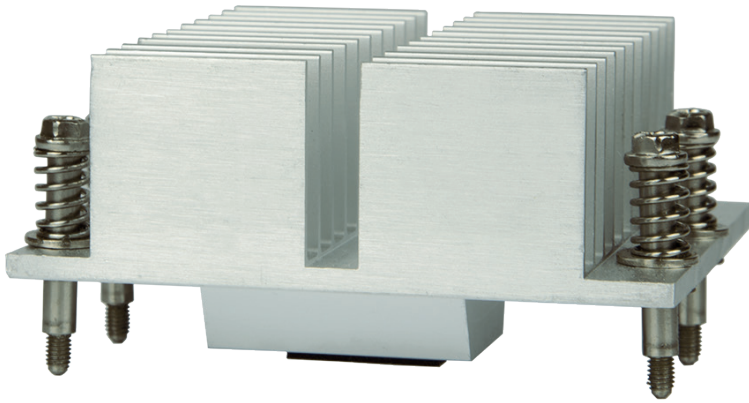
side view [all units in mm]



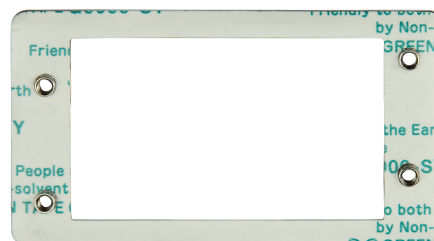
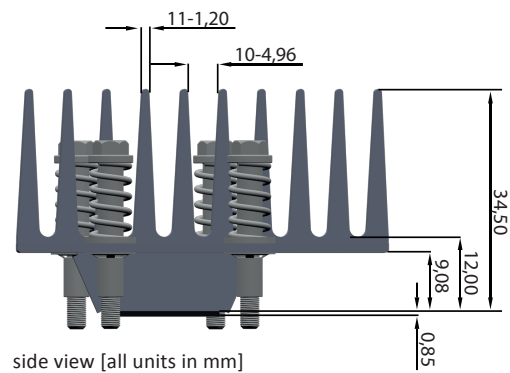
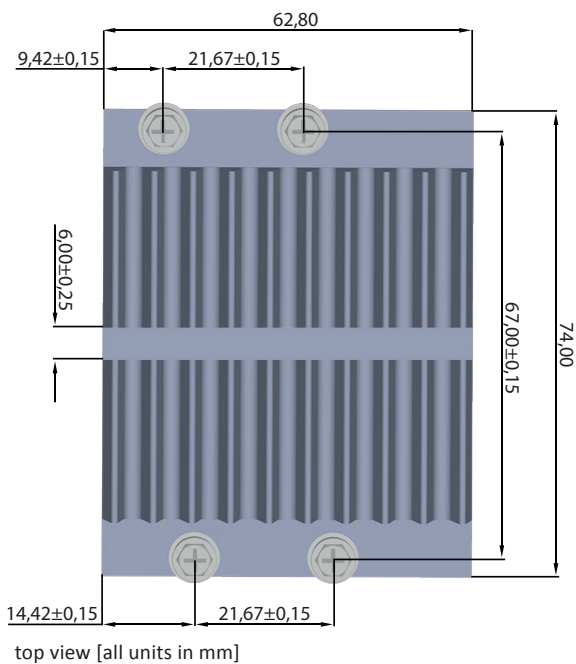
Isolating mounting plate

fanless chassis solutions

Passive Heatsink Cooler for conga-IGX



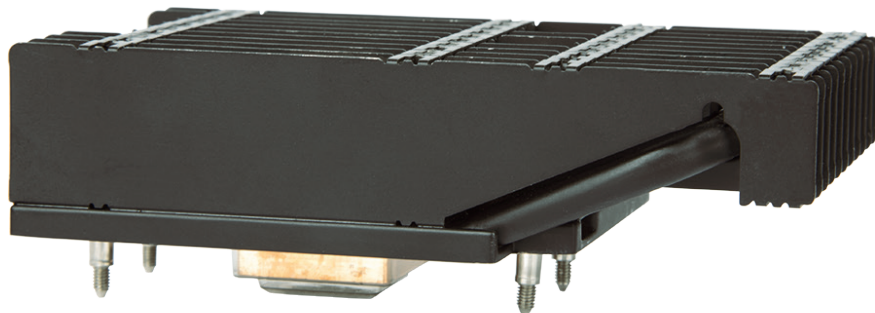
conga-IGX Passive Cooler	Full aluminium incl. isolating backplate
Weight	130g
Supported Processors	AMD GX-210HA SOC (2x 1.0GHz Dual Core / 9W)
Heatsink Mount	Spring-loaded mounting screws for specified downforce Recommended mounting screw torque = 0.6Nm
Backplate	Isolated, metal backplate provides 4 mounting threads for heatsink
Order Code	052434 (conga-IGX Passive Cooler)



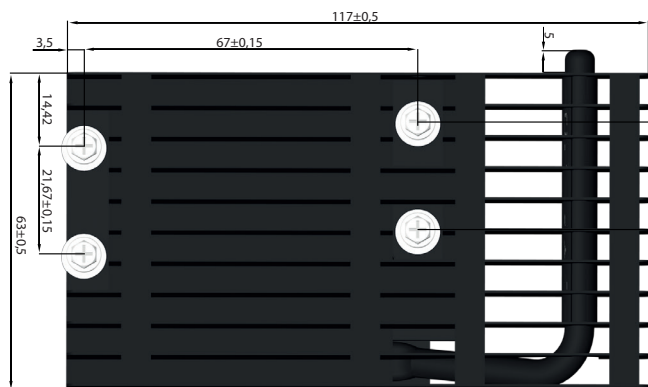
Isolating mounting plate

fanless chassis solutions

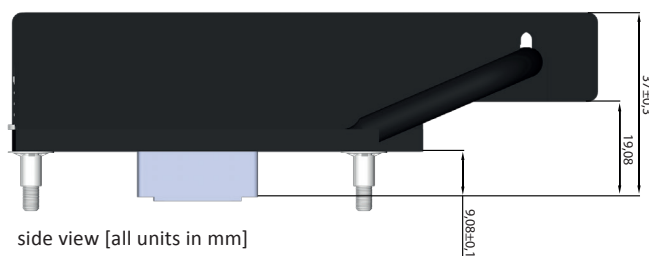
Passive Heatpipe Cooler for conga-IGX



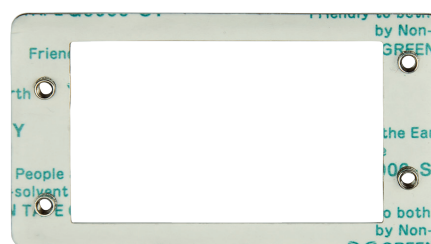
conga-IGX Passive Heatpipe Cooler	Full aluminium incl. isolating backplate
Weight	180g
Supported Processors	AMD GX-217GA SOC (2x 1,65GHz Dual Core / 15W) AMD GX-210HA SOC (2x 1.0GHz Dual Core / 9W)
Heatsink Mount	Spring-loaded mounting screws for specified downforce Recommended mounting screw torque = 0,6Nm
Backplate	Isolated, metal backplate provides 4 mounting threads for heatsink
Order Code	052433 (conga-IGX Passive Heatpipe Cooler)



top view [all units in mm]



side view [all units in mm]



Isolating mounting plate